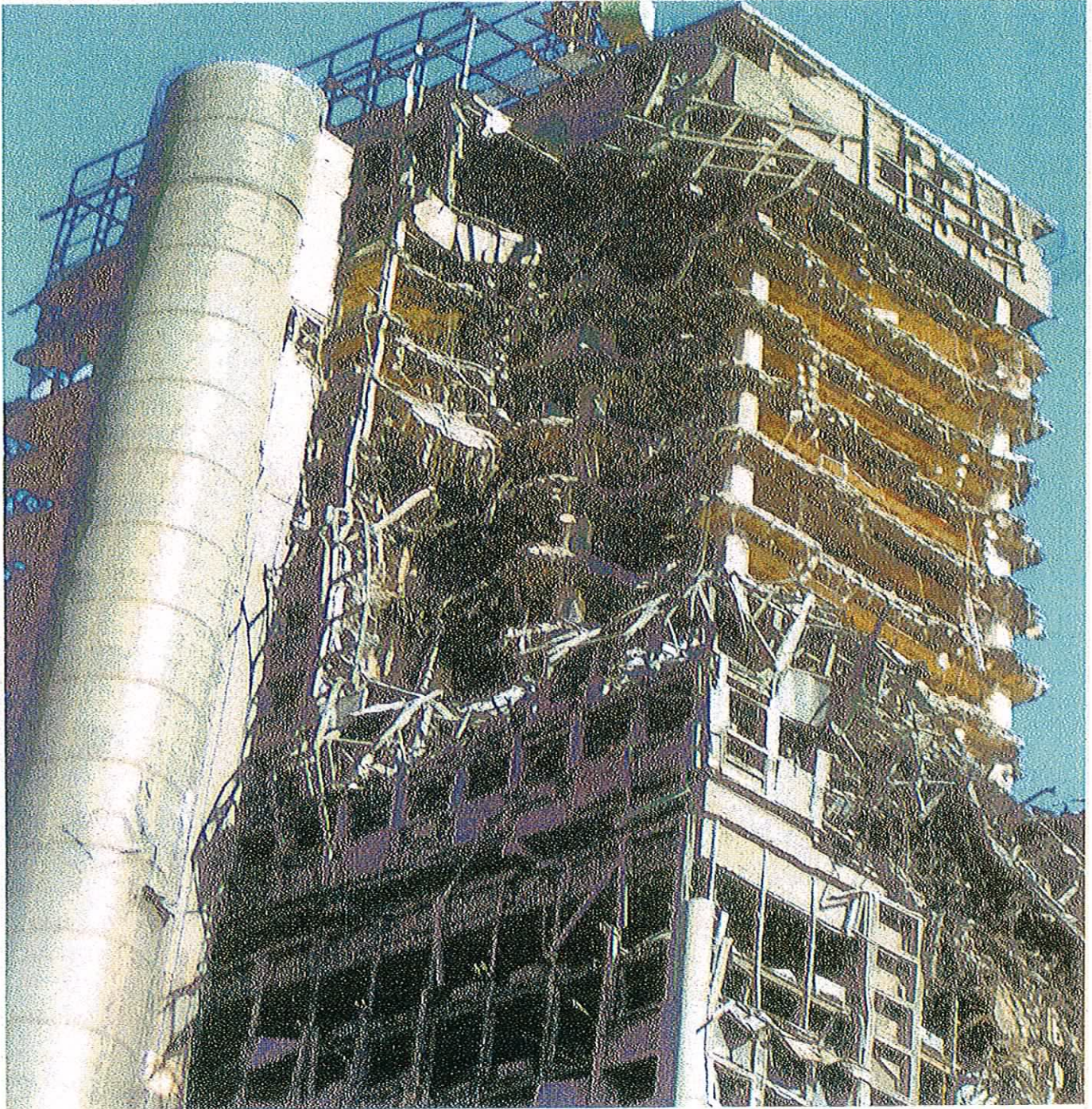


Structural Engineering International



Information on submitting papers:
<http://www.iabse.org/journal/sei>

Publisher
IABSE
ETH-Hönggerberg
CH-8093 Zurich, Switzerland
Tel: Int +41-44-633 2647
Fax: Int +41-44-633 1241
e-mail: secretariat@iabse.org
web: <http://www.iabse.org>

SEI Editorial Board
S.F. Bailey, Chairman.
M. G. Bruschi, M. Faber, N.P. Hoegj,
S. Nakamura, B. Snijder, J.A. Wium,
U. Brunner

Publications Manager
Brindarica Bose, IABSE

Correspondents
China: D. Xu, *Denmark:* M. Braestrup,
Egypt: F. Saad, *Finland:*
M.-K. Söderqvist, *France:* B. Godart,
Germany: U. Kuhlmann, *India:* V. Kumar,
Italy: G. Bignotti, L. Ceriolo,
Japan: J. Kanda, *Korea:* H.M. Koh,
Norway: L. Tøverud, *Poland:* W. Radomski,
Russia: S.Y. Mozalev, *Sweden:*
H. Sundquist, *Thailand:* E. Limuswan,
UK: D.K. Doran, *USA:* J. Burns,
D. Frangopol.

Advertising Inquiries
Sissel Niggeler, IABSE

Published
Quarterly: 1 Feb., 1 May, 1 Aug., 1 Nov.

Price
Included in IABSE Membership.
Subscription: 216 Swiss Francs (CHF)
including mailing costs.
Available through subscription agencies.

ISSN 1016-8664, E-ISSN 1683-0350

Copyright © IABSE. All rights reserved.
Opinions and positions expressed in signed
articles are those of the authors and are not
necessarily those of *Structural Engineering
International* or IABSE.

IABSE Publications
SEI, SEID, Reports

SEI online copies available at:
www.ingentaconnect.com/content/iabse/sei

Front cover:
Madrid Torre Windsor Fire, Madrid,
Spain

See article on page 142

Editorial

Digital Archive for Structural Projects: *Y. Fujino, Japan* 87

Structures Worldwide

Estacio Bascule Bridge, Spain; 88
M. A. Astiz, J. Manterola, J. Fernandez-Revena, Spain
Croydon Centrale, UK: *E. M. Berghbaum, J. A. Austin, A. Pavic, UK* 91

Reports

Stainless Steel Road Bridge in Menorca, Spain: *J. A. Sobrino, Spain* 96

Reports - Robustness of Structures

Robustness of Structures: An Introduction; *M. Faber, Switzerland* 101
Structural Robustness in the Light of Risk and Consequence Analysis:
M. A. Mues, K. E. Fritzens, Canada, S. Glowienka, Germany
Robustness of Frame Structures; 108
D. V. Val, Israel, E. G. Val, Russian Federation
Progressive Collapse of Structures: Nomenclature and Procedures: 113
U. Starossek, Germany
Structural Robustness Analysis and the Fast Fracture Analogy: 118
J. W. Smith, UK
Vulnerability Analysis of Structures; *J. Agarwal, J. England, D. Blockley, UK* 124
Design Oriented Approach for Progressive Collapse Assessment of Steel
Framed Buildings; 129
A. G. Vlassis, B. A. Izzuddin, A. Y. Elghazouli, D. A. Nethercot, UK
A Study on the Collapse Control Design Method for
High - Rise Steel Buildings; 137
A. Wada, K. Ohi, H. Suzuki, M. Kohno, Y. Sakamoto, Japan
Innovative Structural Engineering for Tall Buildings in Fire; 142
S. Lamont, USA, B. Lane, A. Jowsey, J. Torrerro, A. Usmani, G. Flint, UK
Failure Assessment of Simply Supported Floor Slabs under
Elevated Temperature; *E. Omer, B. A. Izzuddin, A. Y. Elghazouli, UK* 148
Fire Resistant Roof Glazing Design; 156
L. Vakar, E. Kool, J. van Wolfswinkel, The Netherlands
Load Capacity Evaluation of Existing Railway Bridges
based on Robustness Quantification; 161
D. Wisniewski, Portugal, J. R. Casas, Spain, M. Ghosn, USA
Robustness and the Eurocodes; 167
H. Gulvanessian, UK, T. Vrouwenvelder, The Netherlands
Danish Requirements for Robustness of Structures:
Background and Implementation; *J. D. Sorensen, H. H. Christensen, Denmark* 172

Eminent Structural Engineers

Prof. Dr William Selim Hanna (1896-1980), Egypt: *F. Saad, Egypt* 178

Panorama

Responding to Tomorrow's Challenges in Structural Engineering 182
Improving Infrastructure Worldwide 184
IABSE Members' Business Cards 186
Calendar of Events 187
Application for IABSE Membership 188

Abstracting and Indexing: This publication is abstracted quarterly in Cambridge Scientific Abstracts under CSA Civil Engineering Abstracts: <http://www.csa.com/engineering>, at Emerald Abstracts, International Civil Engineering Abstracts: <http://www.emeraldinsight.com/abstracts>, and at Construction and Building Abstracts (CBA): <http://www.cbaweb.co.uk/>