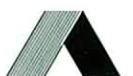
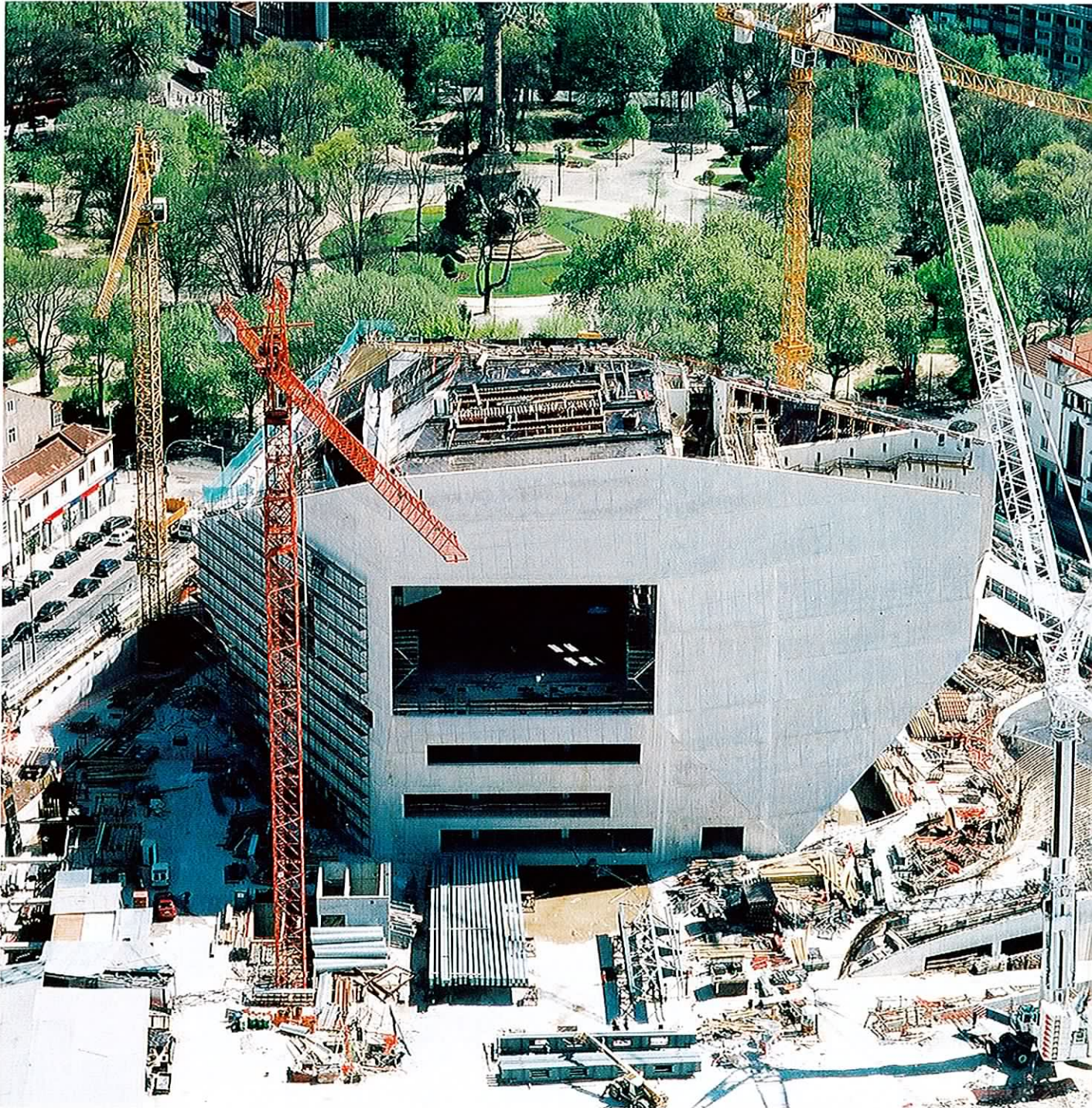


Structural Engineering International



Information on submitting papers:
<http://www.iabse.org>

Publisher
IABSE
ETH-Hönggerberg
CH-8093 Zurich, Switzerland
Tel: Int +41-44-633 2647
Fax: Int +41-44-633 1241
e-mail: secretariat@iabse.org
web: <http://www.iabse.org>

SEI Editorial Board
S.F. Bailey, Chairman.
M. G. Bruschi, M. Faber, T. Keller.
S. Nakamura, B. Snijder, J.A. Wium,
A. Golay.

Publications Manager
Ms Carolyn Gorczyca

Correspondents
China: D. Xu. *Denmark:* N. P. Høj.
Egypt: F. Saad. *Finland:*
M.-K. Söderqvist. *France:* B. Godart.
Germany: U. Kuhlmann. *India:* V. Kumar.
Italy: G. Bignotti, L. Ceriolo.
Japan: J. Kanda. *Korea:* H.M. Koh.
Norway: L. Toverud. *Poland:* W. Radomski.
Russia: S.V. Mozalev. *Sweden:*
H. Sundquist. *Thailand:* E. Limsuwan.
UK: D. K. Doran. *USA:* J. Burns,
D. Frangopol.

Advertising Inquiries
Ms Sissel Niggeler, IABSE

Printer
Multicolor Print AG, CH-6341 Baar

Published
Quarterly: 1 Feb., 1 May, 1 Aug., 1 Nov.

Price
Included in IABSE Membership.
Subscription: 216 Swiss Francs (CHF)
including mailing costs.
Available through subscription agencies.

ISSN 1016-8664, E-ISSN 1683-0350

Copyright © IABSE. All rights reserved.
Opinions and positions expressed in signed
articles are those of the authors and are not
necessarily those of *Structural Engineering
International* or IABSE.

Front cover:
Casa da Música, Porto

See article on page 68

Editorial

- The precautionary principle: A hindrance to innovation? 67
C. Cremona, France

Structures in Portugal

- Structures in Portugal: An Introduction 68
A. Adao da Fonseca, Portugal
- Casa da Música, Porto 68
R. Furtado, R. Oliveira, P. Moas, Portugal
- New Braga Municipal Stadium, Braga 72
R. Furtado, C. Quinaz, R. Bastos, Portugal
- Dragon Football Stadium, Porto 77
A. Reis, N. Lopes, A. Campos e Matos, P. Pimenta, H. Marques, Portugal
- São Gabriel and São Rafael Buildings, Lisbon 80
J. Appleton, J. Almeida, T. Abecassis, Portugal
- SATUOeiras Cable Railway System 82
J. Camara, J. Rocha, D. Cardoso, Portugal
- Infant Henrique Bridge over the River Douro, Porto 85
A. Adao da Fonseca, Portugal; F.M. Mato, Spain
- Bridge over the Corgo River Valley 88
A. Rito, Portugal
- Loureiro Viaduct 90
J.L. Cancio Martins, Portugal
- Rehabilitation of the Figueira da Foz Bridge 92
A. Rito, J. Appleton, Portugal

Reports

- Advances in Numerical Bridge Aerodynamics and Recent Applications 95
G. Morgenthal, Germany
- A Three Dimensional Model for Masonry Arch Bridge Behaviour 101
B. Harvey, A. Tomor, F. Smith, UK

Science and Technology

- Design of Slender Composite Bridges Considering Available 105
Support Region Rotation Capacity
A. Lääne, Estonia; J-P Lebet, Switzerland

Panorama

- Role of Structural Engineers towards Reduction of Poverty 113
- Calendar of Events 115
- IABSE Members' Business Cards 115
- Application for IABSE Membership 116

Abstracting and Indexing: This publication is abstracted quarterly in Cambridge Scientific Abstracts under CSA Civil Engineering Abstracts: <http://www.csa.com/engineering>, at Emerald Abstracts, International Civil Engineering Abstracts: <http://www.emeraldinsight.com/abstracts>, and at Construction and Building Abstracts (CBA): <http://www.cbaweb.co.uk/>